

### Testing Made Easy



- Innovative plug for testing 1/2" & 3/8" PEX stub outs
- Easy Installation - Simply screw the plug in by hand. No tools or crimp rings needed.
- Triple seal and aggressive thread have a working pressure up to 160psi.
- Most cost effective plug available for testing all brands of PEX.

### New PEX Elbow



- PEX elbow combines strength and ease of installation. Simply bend pipe and clip elbow into any 1-3/8" keyed-hole bracket.
- Versatility allows multiple elbows to be stacked and nailed to studs.
- Works with all brands of 1/2" & 3/8" PEX.

*New and  
Innovative*



**P-2021 Elbow**  
For 1/2" & 3/8" PEX

## *Pex Products*

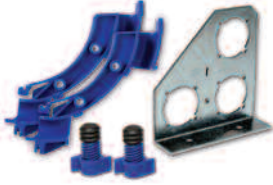
*Designed For Easier  
Installation  
and Testing*



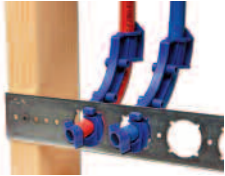
**P-0049 Plug**  
For Testing 1/2"

**P-0048\* Plug**  
For Testing 3/8"  
\* Will be available August 1st

### Angled Bracket Kits - Versatile Bracket Kit can be mounted vertically or horizontally



| Part No.       | Description                              | Mstr Ctn Qty |
|----------------|--|--------------|
| PKIT-Faucet-01 | 2 Elbows, 2 Plugs and 1 Bracket (P-1076) | 10           |
| PKIT-Toilet-01 | Single Elbow, Plug and Bracket (P-1056)  | 10           |
| P-1076         | 3-Hole Bracket Only                      | 50           |
| P-1056         | 1-Hole Bracket Only                      | 50           |

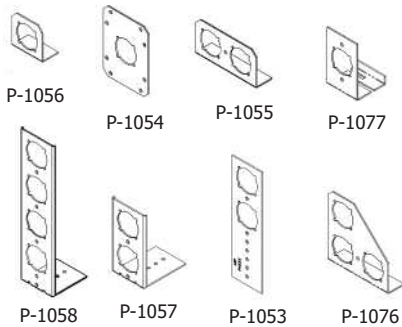


### Straight Bracket Kits - Perfect when spanning across stud bays

| Part No.       | Description                              | Mstr Ctn Qty |
|----------------|--|--------------|
| PKIT-Faucet-02 | 2 Elbows, 2 Plugs and 1 Bracket (P-1064) | 10           |
| PKIT-Toilet-02 | Single Elbow, Plug and Bracket (P-1064)  | 10           |
| P-1064         | Straight Bracket Only                    | 10           |

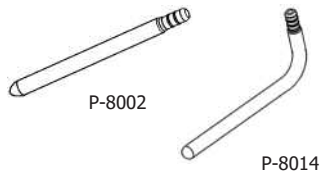
## PEX Products

### Galvanized PipeSecure Brackets



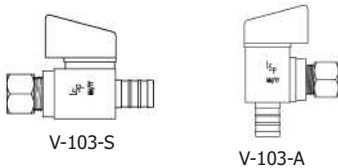
| Part No. | Description  | Mstr Ctn Qty |
|----------|--|--------------|
| P-1053   | Two-hole, vertical, flat bracket                       | 50           |
| P-1054   | One-hole, flat bracket                                 | 50           |
| P-1055   | Two-hole, side-by-side, angled bracket                 | 50           |
| P-1056   | One-hole, angled bracket                               | 50           |
| P-1057   | Two-hole, vertical, angled bracket                     | 50           |
| P-1058   | Four-hole, vertical, angled bracket                    | 50           |
| P-1064   | 20" galvanized, 1 3/8" notched holes, straight bracket | 50           |
| P-1067   | 26" galvanized, 1 3/8" notched holes, straight bracket | 25           |
| P-1077   | Single-hole, concrete mount, angled bracket            | 50           |

### Copper Stub-Outs (Type L)



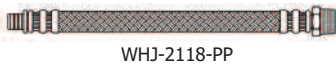
| Part No. | Description                           | Mstr Ctn Qty |
|----------|---------------------------------------|--------------|
| P-8002   | 1/2" x 1/2" Standard Pex, 6" Straight | 50           |
| P-8006   | 1/2" x 3/8" Standard PEX, 8" Elbow    | 50           |
| P-8014   | 1/2" x 1/2" Standard PEX, 8" Elbow    | 50           |
| P-8007   | 1/2" x 1/2" Wirsbo, 8" Elbow          | 50           |
| P-8008   | 1/2" x 1/2" Rehau, 8" Elbow           | 50           |

### PEX Supply Stops



| Part No. | Inlet    | Outlet         | Mstr Ctn Qty |
|----------|----------|----------------|--------------|
| V-103-A  | 1/2" PEX | 3/8" O.D. COMP | 24           |
| V-103-S  | 1/2" PEX | 3/8" O.D. COMP | 24           |

### Stainless Steel Braided Water Heater Connectors



| Part No.    | Description         | Length | Pieces Per Ctn |
|-------------|---------------------|--------|----------------|
| WHJ-2118-PP | 3/4" MIP x 3/4" PEX | 18"    | 10             |
| WFJ-2118-PP | 3/4" FIP x 3/4" PEX | 18"    | 10             |

### Copper Corrugated Water Heater Connectors



| Part No.   | Description         | Length | Pieces Per Ctn |
|------------|---------------------|--------|----------------|
| WCP-312-PP | 3/4" FIP x 3/4" PEX | 12"    | 25             |
| WCP-318-PP | 3/4" FIP x 3/4" PEX | 18"    | 25             |
| WCP-324-PP | 3/4" FIP x 3/4" PEX | 24"    | 25             |

### Dishwasher Connectors - use when an angle stop is not needed (Manifold Systems)



| Part No.   | Description                     | Length | Pieces Per Ctn |
|------------|---------------------------------|--------|----------------|
| KDW-810-PP | 3/8" PEX x 3/8" Comp w/90 Elbow | 10"    | 10             |
| KDW-848-PP | 3/8" PEX x 3/8" Comp w/90 Elbow | 48"    | 10             |
| KDW-872-PP | 3/8" PEX x 3/8" Comp w/90 Elbow | 72"    | 10             |